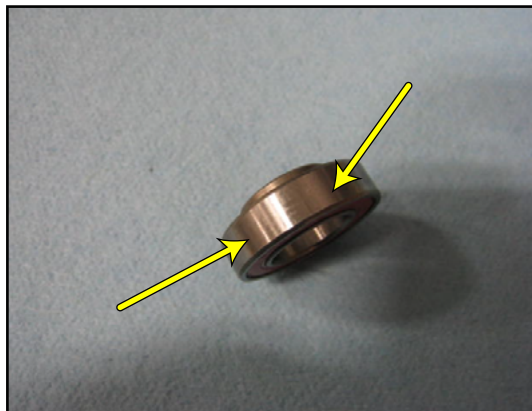


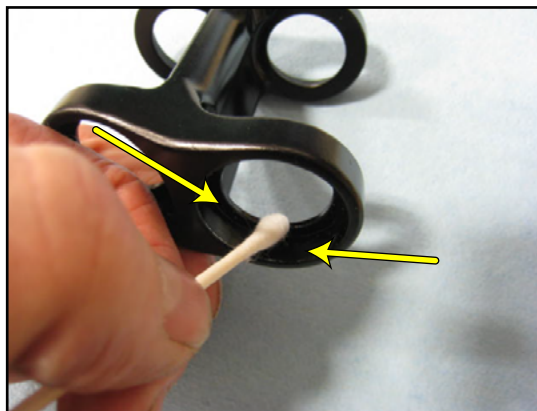
1 LOWER LINK AND BEARINGS



2 Bearing race must be clean of oil or grease



3 Bearing pocket must be clean of oil or grease

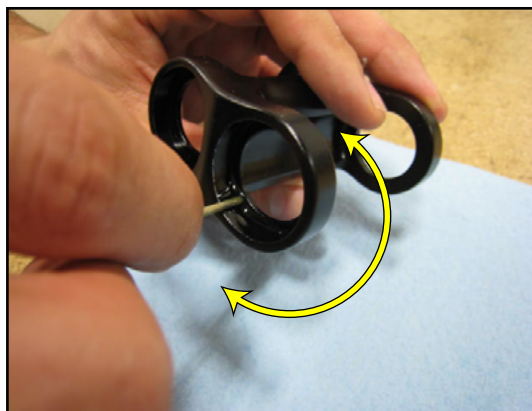


It is best to use alcohol to clean bearings, bearing pockets, and threads to ensure no oil or grease is on any of the surfaces during the assembly process

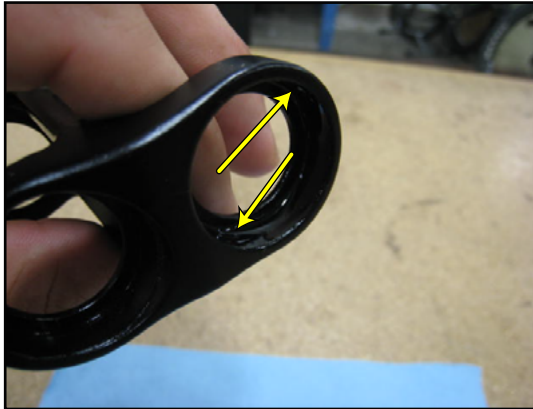
4 Apply Loctite 609 or equivalent to DS bearing pockets



5 Use a toothpick to spread the Loctite to coat bearing pocket



- 6 Use enough Loctite to cover surface until wet



- 7 Press bearings into link



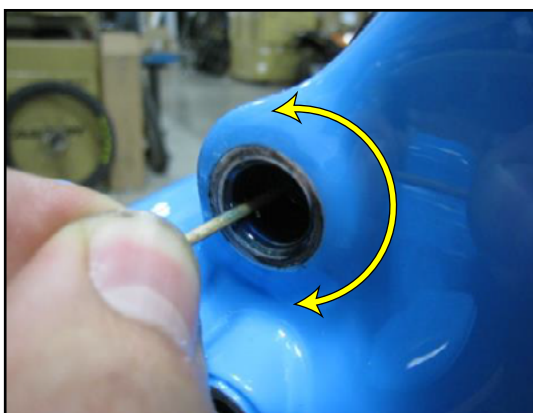
- 8 **Do not** put loctite on bolt threads



- 9 Use Loctite 243 on threads in front triangle (both sides)



- 10 Use a toothpick to spread the Loctite to coat threads

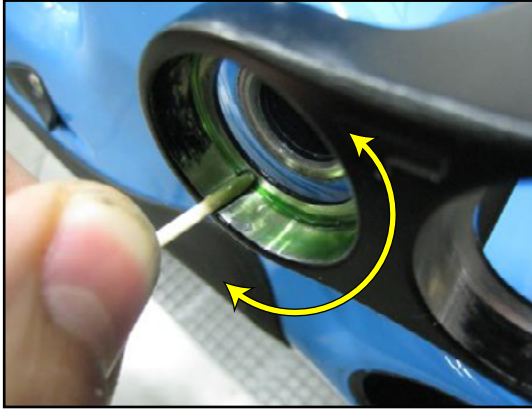


- 11 Install lower link DS Bolt and torque to 35Nm



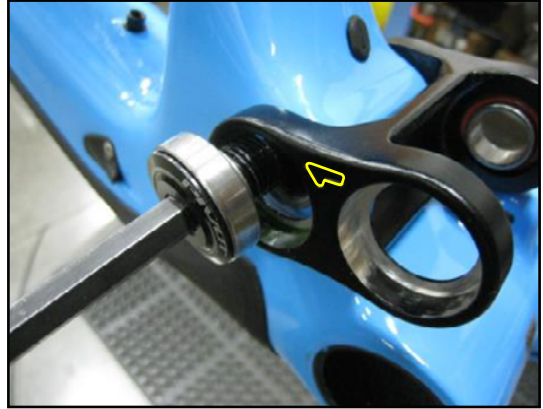
12

Use a toothpick to spread Loctite 609 or equivalent to NDS bearing pockets.



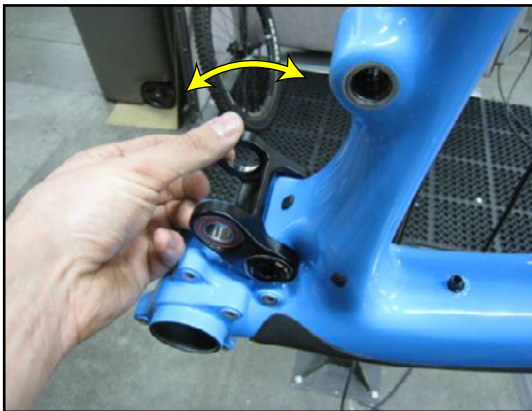
13

Install lower link with arrow on NDS facing forward and torque to 35Nm



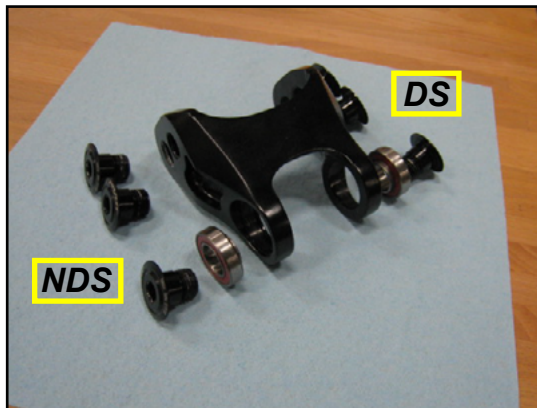
14

Check Motion of link to ensure free movement



15

UPPER LINK HARDWARE AND BEARINGS

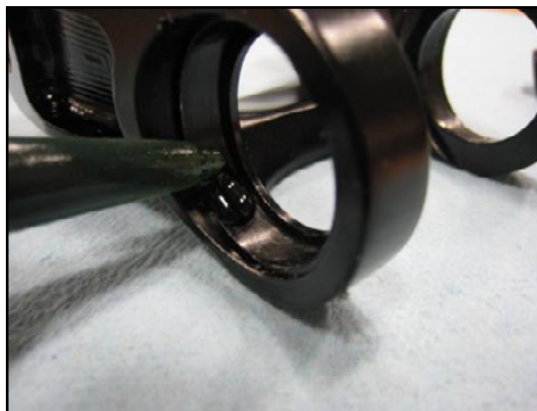


Before installation clean oil and grease off of bearings and link.

It is best to use alcohol to clean bearings, bearing pockets, and threads to ensure no oil or grease is on any of the surfaces during the assembly process.

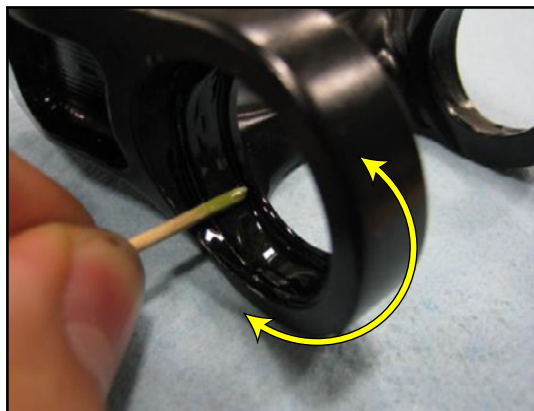
16

Apply Loctite 609 or equivalent to **DS bearing pocket only**



17

Use a toothpick to spread the Loctite to coat bearing



18

Use enough Loctite to cover surface until wet



19

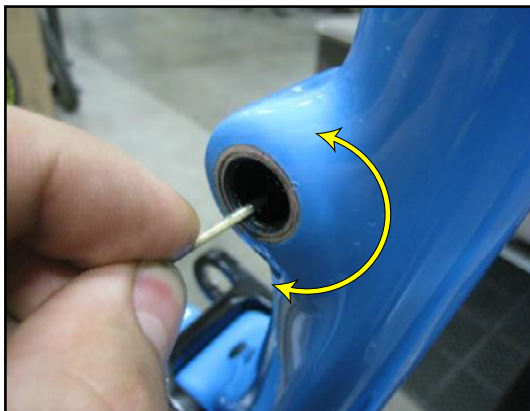
Install bearing on **DS only**



- 20 Apply Loctite 243 to upper mount threads



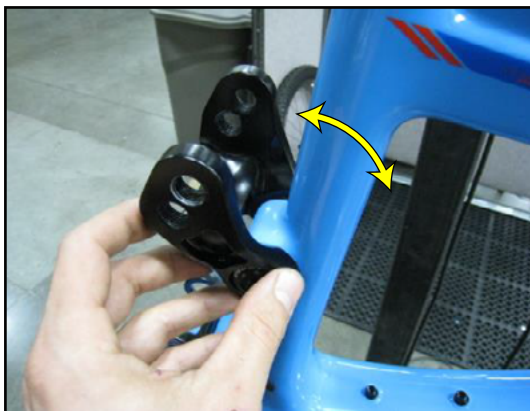
- 21 Use a toothpick to spread the Loctite to coat threads



- 22 Install bolt in DS and torque to 35Nm



- 23 Check motion of link to ensure free movement



24

CLEVIS HARDWARE AND BEARINGS



25

Apply Loctite 609 or equivalent to bearing pockets



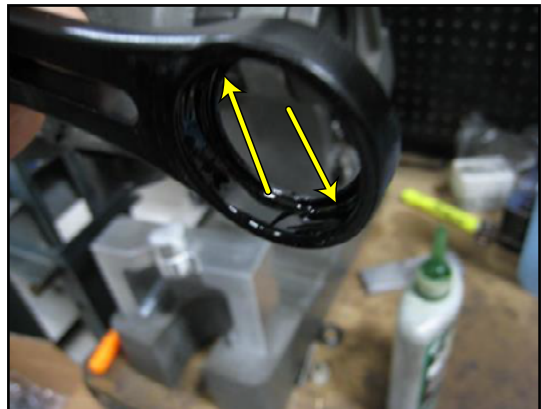
26

Use a toothpick to spread the Loctite to coat bearing



27

Use enough Loctite to cover surface until wet



28

Press bearings into lower link

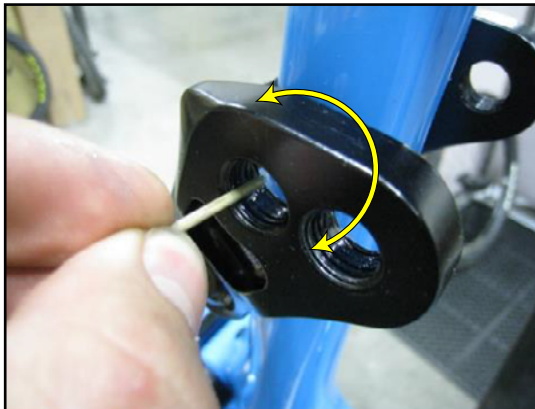


29

Use Loctite 243 on threads



- 30 Use a toothpick to spread the Loctite to coat threads



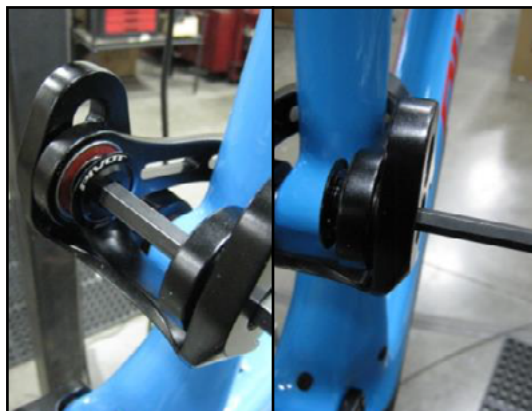
- 31 Apply enough Loctite to cover threads as shown



- 32 Install clevis with threaded side up



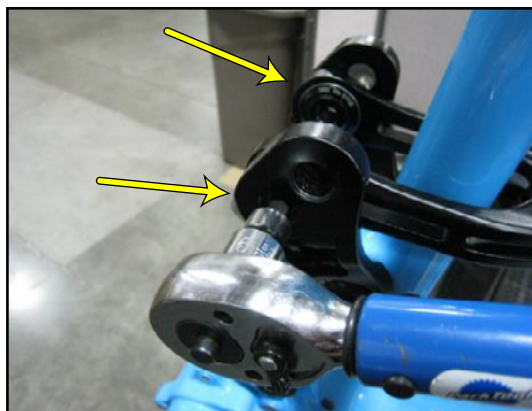
- 33 Install bolts



- 34 Install shock spacer to assist bolt torque



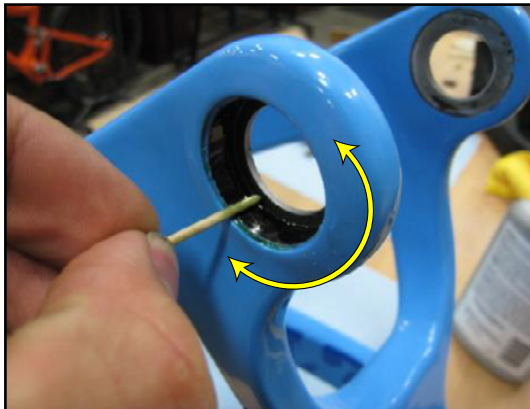
- 35 Torque bolts to 35Nm



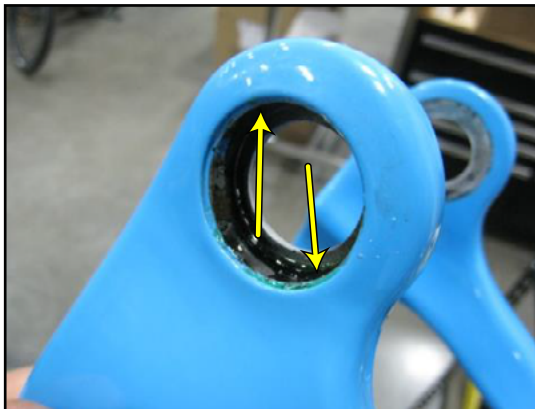
- 36** Apply Loctite 609 or equivalent to RT bearing pockets



- 37** Use a toothpick to spread the Loctite to coat bearing



- 38** Use enough Loctite to cover surface until wet



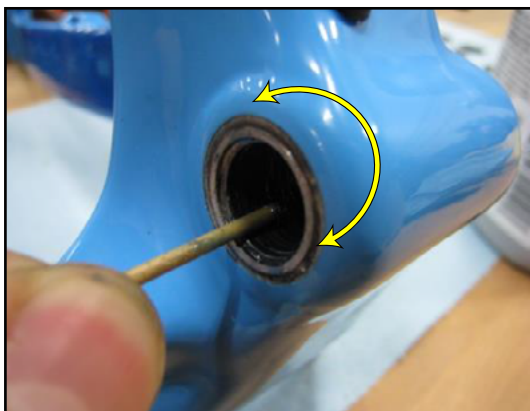
- 39** Install bearings



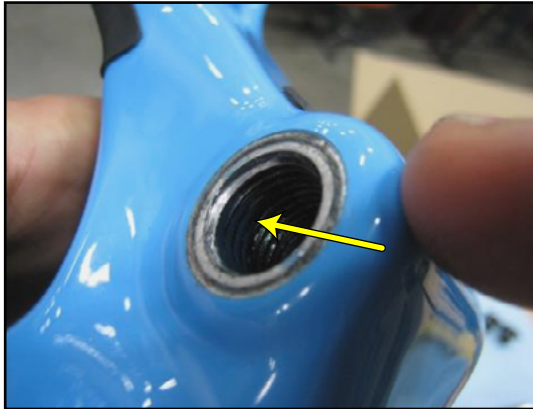
- 40** Use Loctite 243 on RT threads



- 41** Use a toothpick to spread the Loctite to coat threads



- 42 Apply enough Loctite to cover threads as shown



- 43 Install DS bolt and torque to 35Nm



- 44 Apply loctite 609 or equivalent to NDS bearing pocket



- 45 Install NDS bearing and bolt and torque to 35Nm



- 46 Check full motion and install shock or re-install shock spacer.

