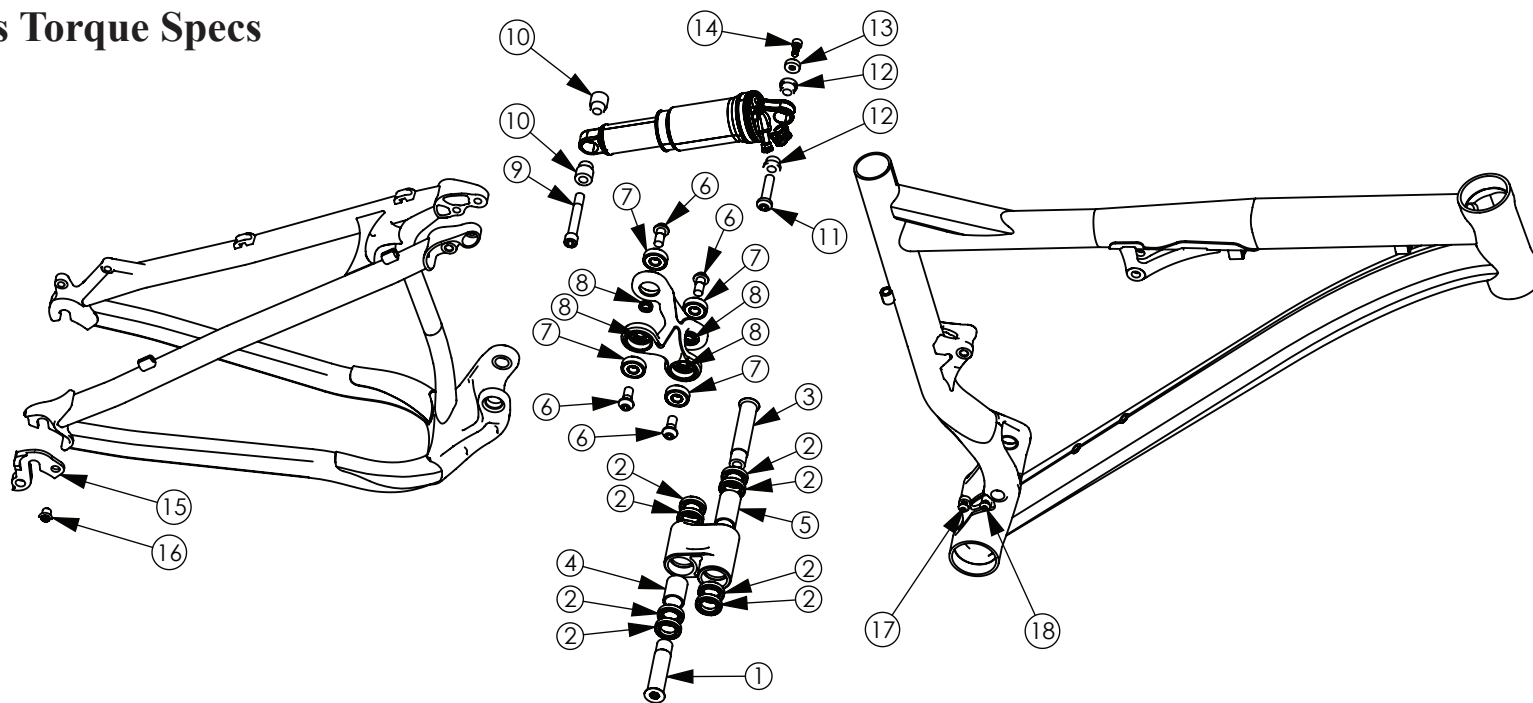


Mach Series Torque Specs



| ITEM NO. | PART NUMBER | DESCRIPTION | TORQUE/PREP | QTY. |
|----------|-------------|-----------------------------|-------------------------------------|------|
| 1 | MP0101 | 65mm Pivot Pin | 35Nm, 306in-lb, 27ft-lb ANTI-SEIZE | 1 |
| 2 | BR0101 | Enduro 6802 2RS MAX Bearing | GREASE FOR PRESS | 8 |
| 3 | MP0102 | 76mm Pivot Pin | 35Nm, 306in-lb, 27ft-lb ANTI-SEIZE | 2 |
| 4 | MP0103 | 25MM Bearing Sleeve | | 1 |
| 5 | MP0104 | 36mm Bearing Sleeve | | 1 |
| 6 | MP0105 | M8 x 17mm Custom SHCS | 13Nm, 120in-lb, 10ft-lb, GREASE | 4 |
| 7 | BR0102 | Enduro 608 2RS MAX Bearing | GREASE FOR PRESS | 4 |
| 8 | MP0106 | 8mm ID x 3mm Pivot Washer | | 4 |
| 9 | MP0107 | M8 x 55mm Custom Shock Bolt | 13Nm, 120in-lb, 10ft-lb, ANTI-SEIZE | 1 |
| 10 | VP0101 | Shock Spacer - 36mm Gap | | 2 |
| 11 | MP0108 | 8mm OD Shock Mount Pin - M5 | ANTI-SEIZE | 1 |
| 12 | VP0102 | Shock Spacer - 22mm Gap | | 2 |
| 13 | MP0109 | Shock Mount Washer | | 1 |
| 14 | VP0103 | M5 x 12 Shock Mount Bolt | 7Nm, 60in-lb, 5ft-lb BLUE LOCTITE | 1 |
| 15 | MP0110 | Deraillieur Hanger | | 1 |
| 16 | VP0103 | 8mm Chaining Bolt | 7Nm, 60in-lb, 5ft-lb, GREASE | 1 |
| 17 | VP0104 | M5 BHCS 10mm - FT DER MOUNT | 5Nm, 42in-lb, 3.5ft-lb, GREASE | 1 |
| 18 | VP0105 | M5 BHCS 12mm - FT DER MOUNT | 5Nm, 42in-lb, 3.5ft-lb, GREASE | 1 |