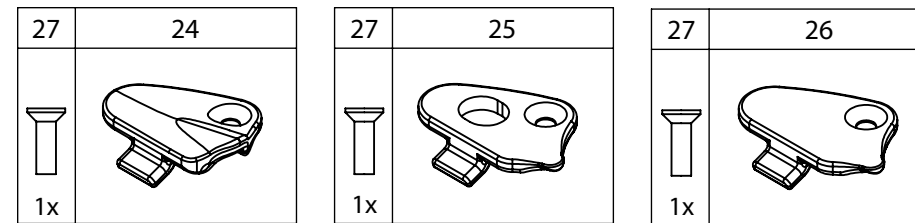
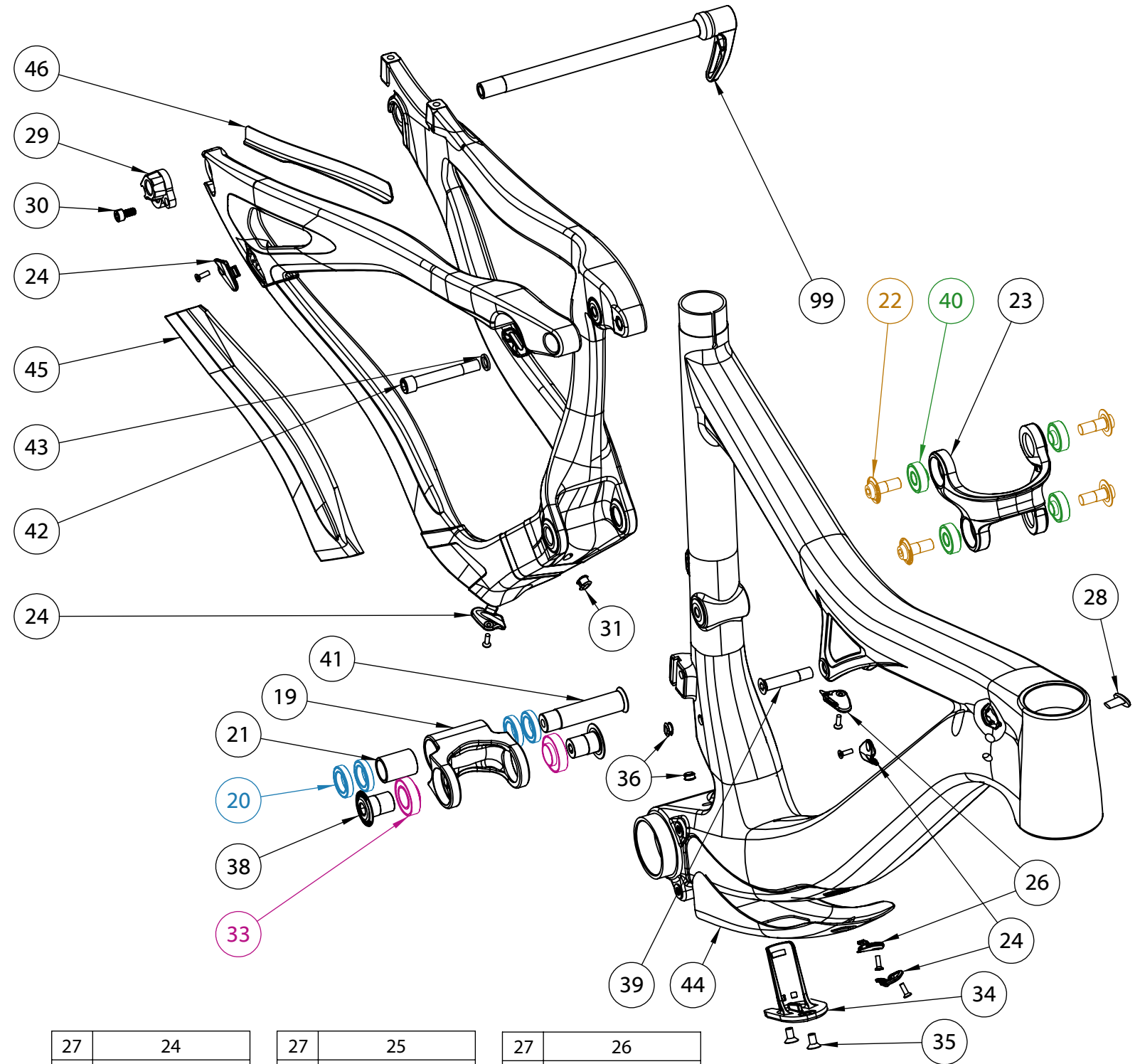


MACH 429 C SL V2

NUMBER	PART NAME	DESCRIPTION	Torque	*
19	FP-LNK-LL-BLK-V2-R1	34mm In-to-Out Lower Link		
20	FP-BRG-6802-LLBMAX	6802 Std. Lower Link Rear Bearing		
21	FP-SLV-LL-25MM	25mm Lower Link Bearing Sleeve		
22	FP-BLT-M8*20-BLK	M8x20 Upper Link Bolt	13 Nm (10 lb-ft)	●
23	FP-LNK-UL-50MM-V2-R2	50mm Out-to-Out Upper Link		
24	FP-CLM-MECH-FRM-V1	Internal Routing Cable Clamp		
25	FP-CLM-DI2-FRM-V1	Internal Routing Di2 Clamp		
26	FP-CVR-MECH-FRM-V2	Internal Routing Hole Cover		
27	FP-SCW-FLT-M3*10	M3x10 Cable Clamp Screw (Included w/ Clamp)		
28	FP-PLG-MECH-5.5MM	5.5mm Rubber Cable Plug		
29	FP-RDH-TA-12MM-BLK-V1	Rear Derailleur Hanger 12mm TA		
30	FP-SCW-SCK-M5*10	M5x10 Rear Derailleur Hanger Screw	7 Nm (5 lb-ft)	□
31	FP-PLG-DI2-7*8*5	7x8mm Di2 Plug Ext'd		
32	FP-GDE-DI2-7*8*5*2.5	7x8mm Di2 Wire Guide Ext'd		
33	FP-BRG-6902-LLUMAXECN	28mm 6902 Ext'd Lower Link Front Bearing		
34	FP-CVR-DI2-DT-V1	Di2 Downtube Battery Holder		
35	FP-SCW-FLT-M5*16	M5x16 Di2 DT Battery Cover Screws		
36	FP-PLG-DI2-7*8*2.5	7x8mm Di2 Plug		
37	FP-GDE-DI2-7*8*2.5*2.5	7x8mm Di2 Wire Guide		
38	FP-BLT-M14*20-BLK-V2	M14x20 Lower Link Front Bolt	35 Nm (27 lb-ft)	□
39	FP-BLT-M8*38-BLK	M8x38 Front Shock Bolt	13 Nm (10 lb-ft)	●
40	FP-BRG-608-LLUMAXE	22mm OD 608 Ext'd Upper Link Bearing		
41	FP-BLT-M14*66-BLK	M14x66 Lower Link Pin	35 Nm (27 lb-ft)	●
42	FP-BLT-M8*55-BLK	M8x55 Rear Shock Bolt	13 Nm (10 lb-ft)	●
43	FP-WSH-8I*120*1W	M8 Shock Bolt Washer		
44	MACH 429 CBN DOWNTUBE GUARD V2	Mach 429 Carbon Downtube Guard V2 (Medium)		
44	MACH 429 CBN DT GUARD SMALL V2	Mach 429 Carbon Downtube Guard V2 (Small)		
44	MACH 429 CBN DT GUARD LARGE V2	Mach 429 Carbon Downtube Guard V2 (Large)		
44	MACH 429 CBN DT GUARD XL V2	Mach 429 Carbon Downtube Guard V2 (X-Large)		
45	MACH 429 CBN CS GUARD V2	Mach 429 Carbon Chainstay Guard V2		
46	MACH 429 CBN SS GUARD V2	Mach 429 Carbon Seatstay Guard V2		
99	DT SWISS 148 RWS	148x12mm RWS Thru Axle		



* ○ = grease ● = anti-seize ● = anti-seize or grease □ = loctite 243