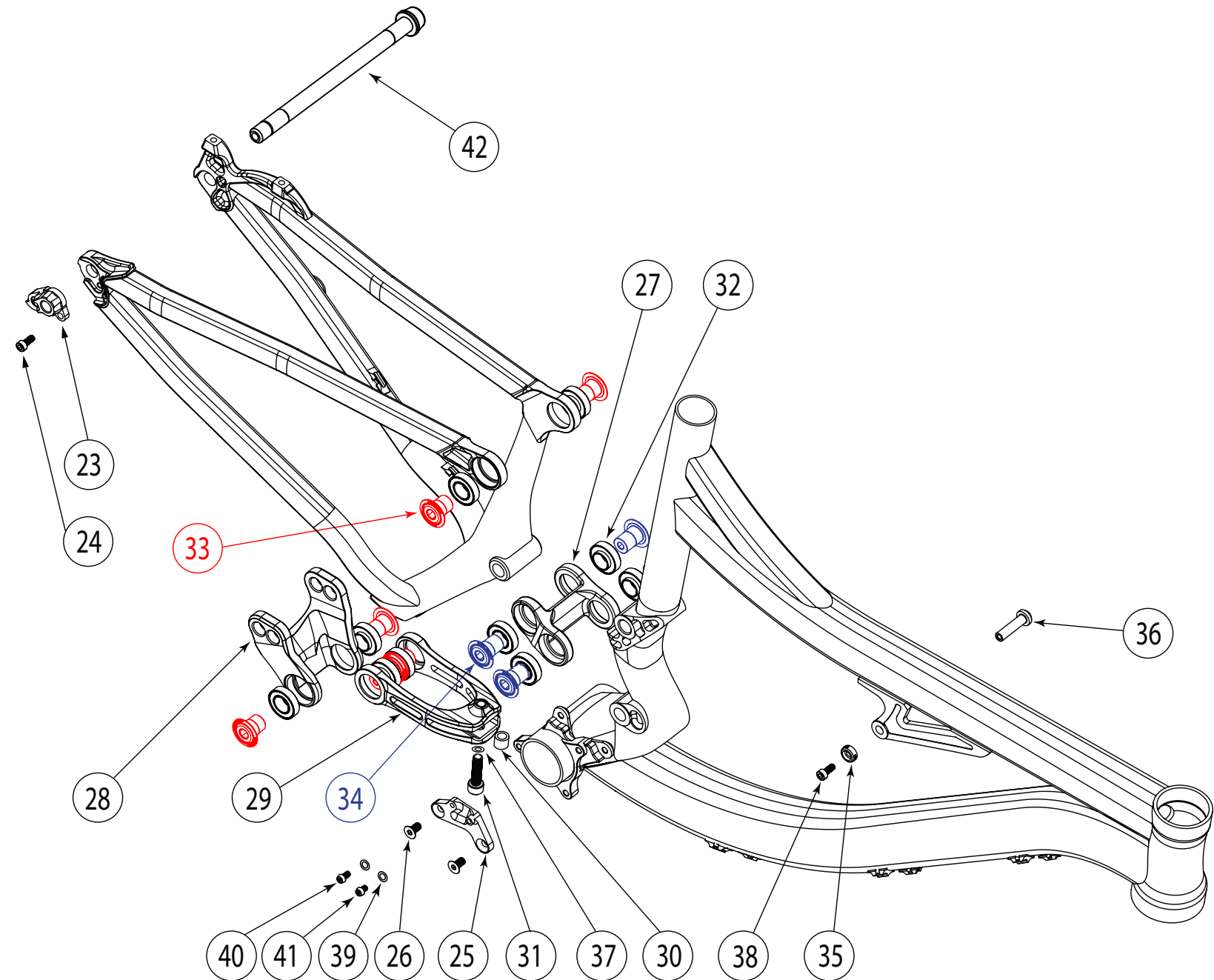


MACH 6 A

NUMBER	PART NAME	DESCRIPTION	Torque	*
23	FP-RDH-TA-12MM-BLK-V1	REAR DERAILLEUR HANGER THROUGH AXLE 12MM BLACK V1		
24	FP-SCW-SCK-M5*10	SCREW SOCKET 5X10	7 Nm (5 lb-ft)	○
25	FP-FDM-ETYPE-V2-R1	FD MOUNT E TYPE V2 REV1		
26	FP-SCW-FLT-M6*12	FLATHEAD SCREW M6 x 12L	10 Nm (7 lb-ft)	□
27	FP-LNK-LL-BLK-V4-R1	LINK LOWER BLACK VER4 REV1		
28	FP-LNK-UL-57MM-V2-R1	LINK UPPER 57MM VER2 REV1		
29	FP-CLV-94MM-V2-R1	CLEVIS 94MM VER2 REV1		
30	FP-PIN-CLV-M8*15O-BLK-R2	PIN CLEVIS 8X15 BLACK REV2		
31	FP-SCW-SCK-M8*30-R1	SCREW SOCKET 8X30	28 Nm (21 lb-ft)	●
32	FP-BRG-6902-LLUMAXECN	6902 LLU MAX-E CN	**	
33	FP-BLT-M14*17-BLK	BOLT 14X17 BLACK	35 Nm (27 lb-ft)	□
34	FP-BLT-M14*20-BLK-V2	BOLT 14*20 BLACK V2	35 Nm (27 lb-ft)	□
35	FP-WSH-5I*14O*5W-BLK	WASHER 5I X 14O X 5W BLACK		
36	FP-PIN-SHK-M5*8O-BLK-R2	PIN SHOCK 5X8 BLACK REV2		●
37	FP-WSH-8I*12O*1W	WASHER 8I X 12O X 1W		
38	FP-SCW-SCK-M5*12	SCREW SOCKET 5X12	7 Nm (5 lb-ft)	□
39	FP-WSH-5I*10O*1W	WASHER 5I X 10O X 1W		
40	FP-SCW-BTN-M5*12	SCREW BUTTON 5X12	3 Nm (26 in-lb)	□
41	FP-SCW-BTN-M5*10	SCREW BUTTON 5X10	3 Nm (26 in-lb)	□
42	148MM THROUGH AXLE	148MM THRU AXLE W/ WASHER		○



** See Bearing Assembly Procedure located in the tech specs section at www.pivotcycles.com

* ○ = grease ● = anti-seize ● = anti-seize or grease □ = loctite 243