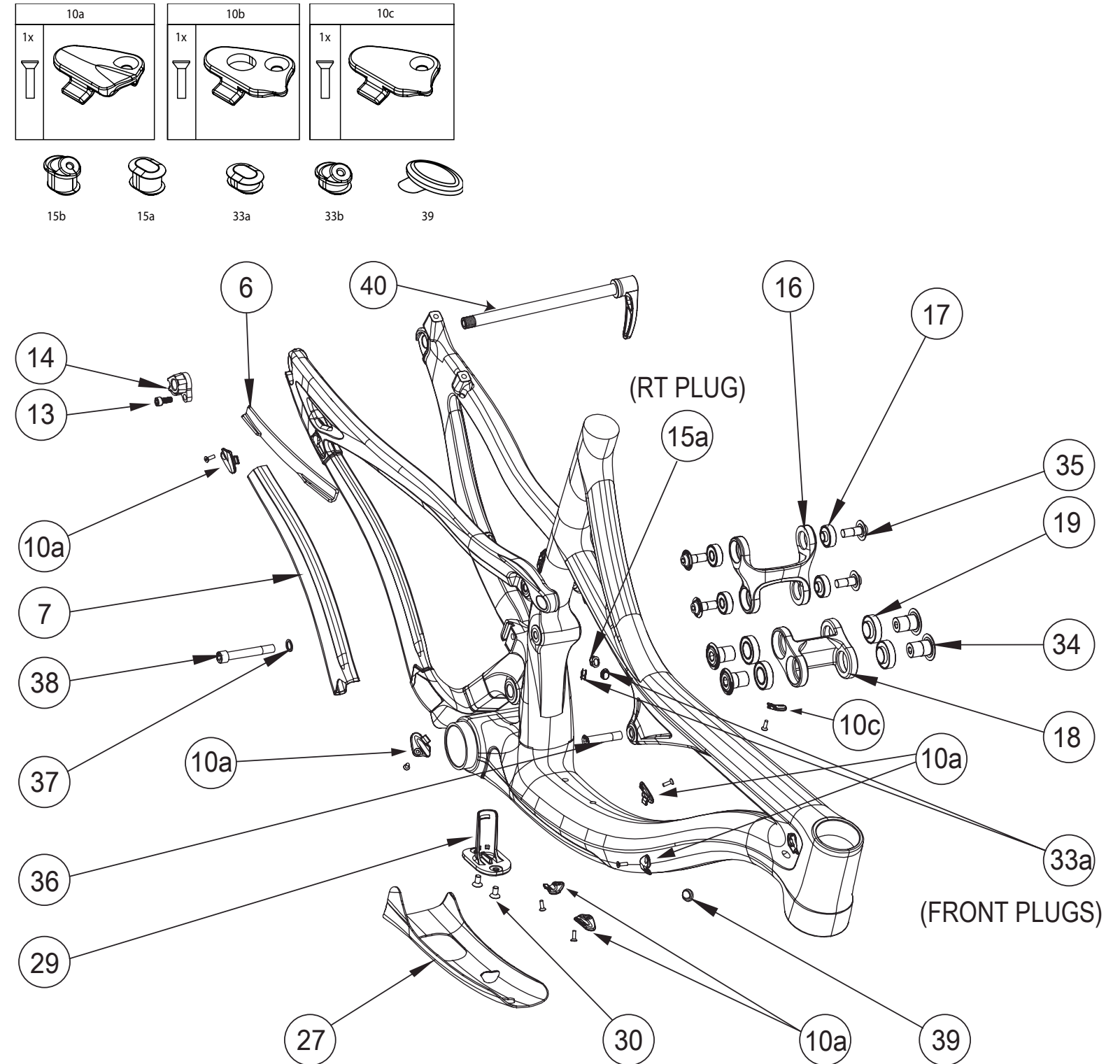


**MACH 4 C**

NUMBER	PART NAME	DESCRIPTION	Torque	*
6	MACH 4 275C SEATSTAY GUARD	MACH 4 275C SEATSTAY GUARD		
7	MACH 4 275C CHAINSTAY GUARD	MACH 4 275C CHAINSTAY GUARD		
10a	FP-CLM-MECH-FRM-V1	CLAMP MECHANICAL FRAME		
10b	FP-CLM-DI2-FRM-V1	CLAMP DI2 FRAME		
10c	FP-CVR-MECH-FRM-V2	COVER MECHANICAL FRAME V2		
13	FP-SCW-SCK-M5*10	SCREW SOCKET 5X10	7 Nm (5 lb-ft)	□
14	FP-RDH-TA-12MM-BLK-V1	REAR DERAILLEUR HANGER THROUGH AXLE 12MM BLACK V1		
15a	FP-PLG-DI2-7*8*5	PLUG DI2 7X8X2.5		
15b	FP-GDE-DI2-7*8*5*2.5	GUIDE DI2 7X8X2.5X2.5		
16	FP-LNK-UL-50MM-V2-R1	LINK UPPER 50MM VER2 REV1		
17	FP-BRG-608-LLUMAXE	608 LLU MAX-E		
18	FP-LNK-LL-BLK-V3-R1	LINK LOWER BLACK VER3 REV1		
19	FP-BRG-6902-LLUMAXECN	6902 LLU MAX-E CN		
27XS	MACH 4 275C DT GUARD XS	MACH 4 275C DT GUARD XSMALL		
27S	MACH 4 275C DT GUARD SMALL	MACH 4 275C DT GUARD SMALL		
27	MACH 4 275C DOWNTUBE GUARD	MACH 4 275C DT GUARD MEDIUM		
27L	MACH 4 275C DT GUARD LARGE	MACH 4 275C DT GUARD LARGE		
27XL	MACH 4 275C DT GUARD XL	MACH 4 275C DT GUARD XLARGE		
29	FP-CVR-DI2-DT-V1	COVER DI2 DOWNTUBE V1		
30	FP-SCW-FLT-M5*10	SCREW FLAT 5x10		
33A	FP-PLG-DI2-7*8*2.5	PLUG DI2 7X8X2.5		
33B	FP-GDE-DI2-7*8*2.5*2.5	GUIDE DI2 7X8X2.5X2.5		
34	FP-BLT-M14*20-BLK-V2	BOLT 14*20 BLACK V2	35 Nm (27 lb-ft)	□
35	FP-BLT-M8*20-BLK	BOLT 8X20 BLACK	13 Nm (10 lb-ft)	□
36	FP-BLT-M8*38-BLK	BOLT 8X38 BLACK	13 Nm (10 lb-ft)	●
37	FP-WSH-8I*120*1W	WASHER 8I X 120 X 1W		
38	FP-BLT-M8*55-BLK	BOLT 8X55 BLACK	13 Nm (10 lb-ft)	●
39	FP-PLG-MECH-5.5MM	PLUG MECHANICAL 5.5MM		
40	DT SWISS 142 RWS	DT SWISS 142 RWS		



\* ○ = grease ● = anti-seize ◐ = anti-seize or grease □ = loctite 243