

Hold the pedal axle using the 6mm hex key.

Using the second 6mm hex key, remove the alloy end cap to expose the 8mm nut (Magnesium pedals have gold end cap).

Remove the axle nut using the 8mm socket. Note: Right Hand pedal has a Left Hand threaded nut so make sure you are turning it the correct way.

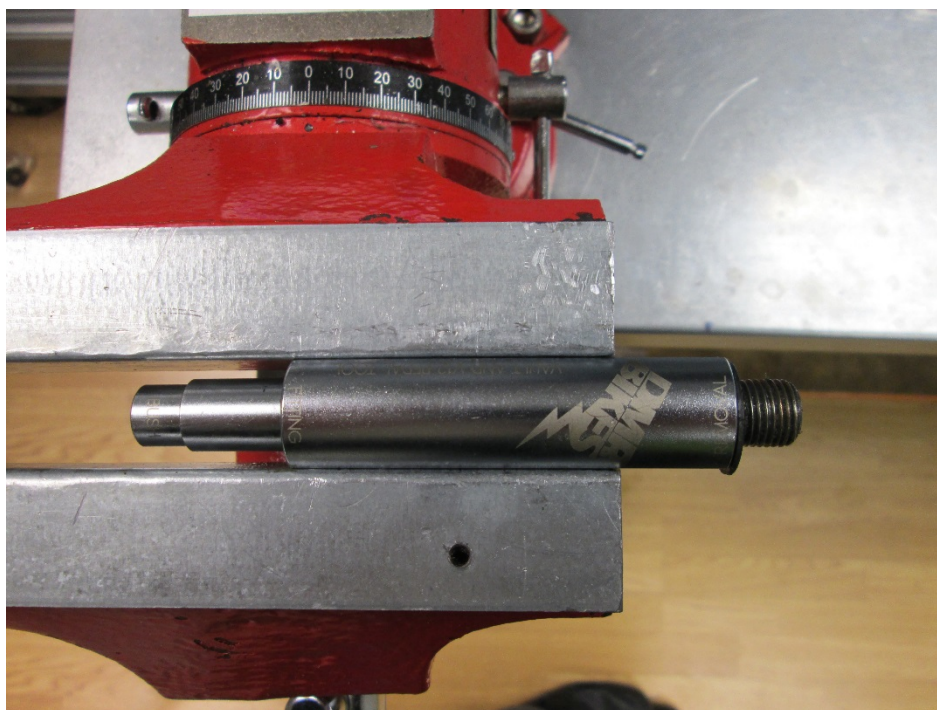
Behind the nut you will find the 6mm washer; remove this.



Remove the axle: Hold the axle and pedal body in each hand and pull apart.



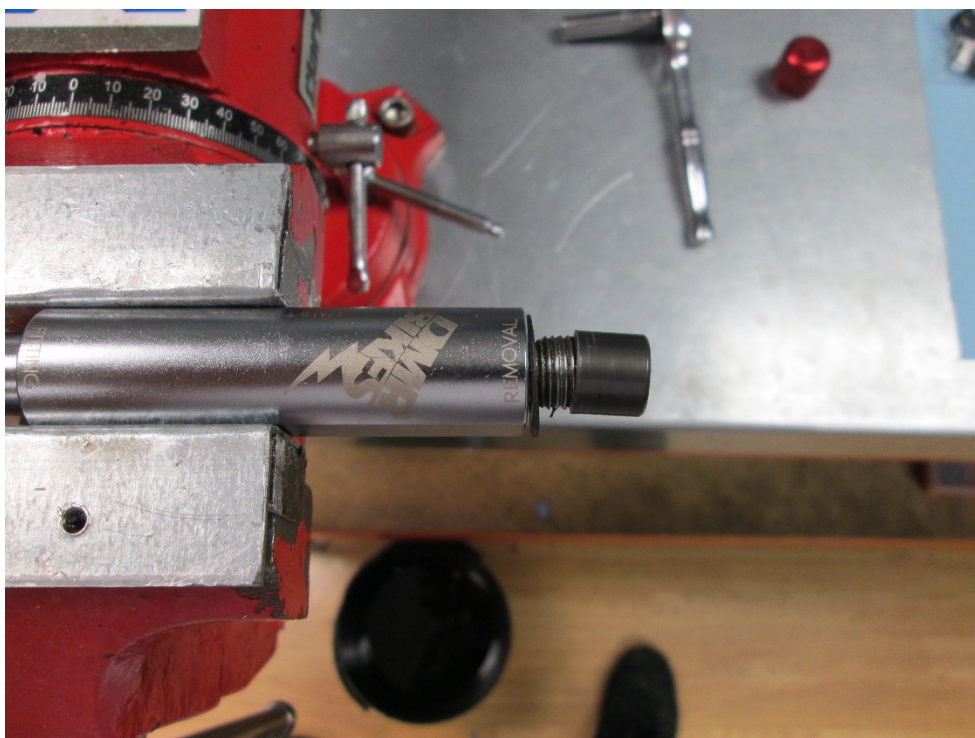
Remove the old rubber seal and clean the axle of any old dirt and grime and inspect for any imperfections on the bearing surfaces.



Mount the DMR pedal tool in the vice with the threaded end out.



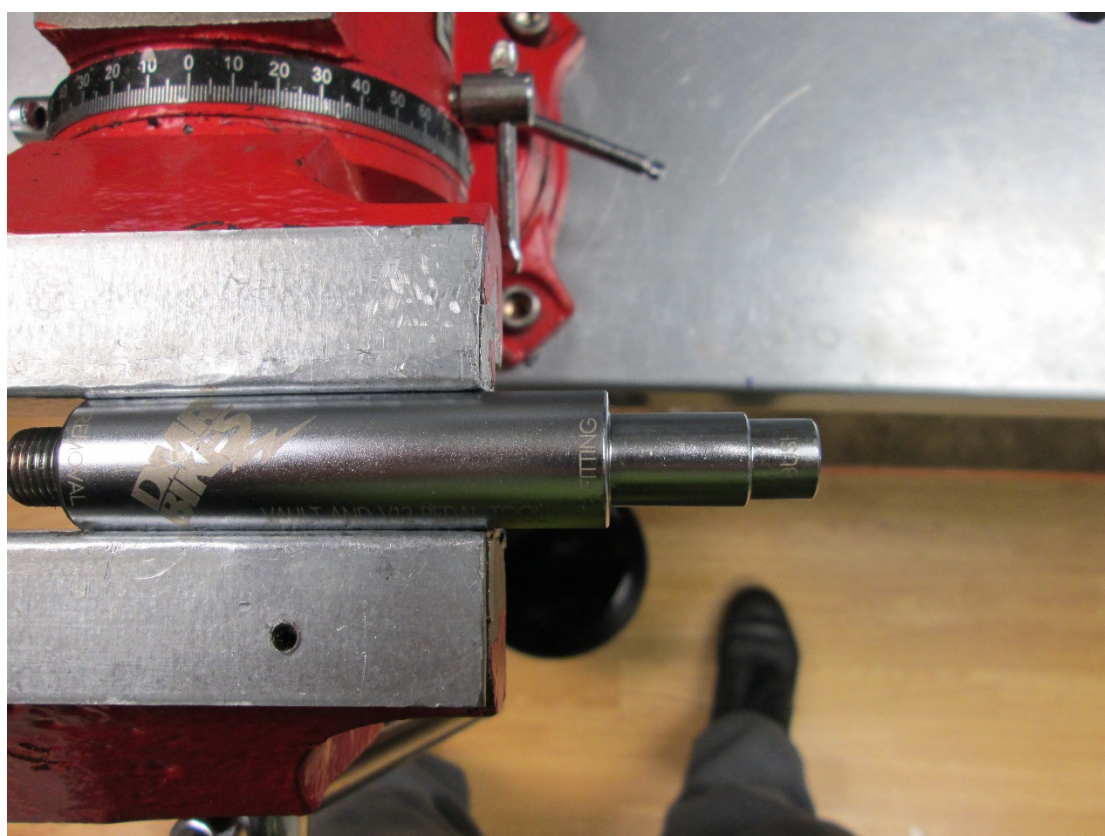
Remove the DU bush: Thread the bush onto the threaded part of the tool whilst applying pressure.



With all the thread engaged, pull the pedal body to remove the DU bush. Note: it may be necessary to gently tap the pedal body with a rubber mallet to ease the DU bush away.



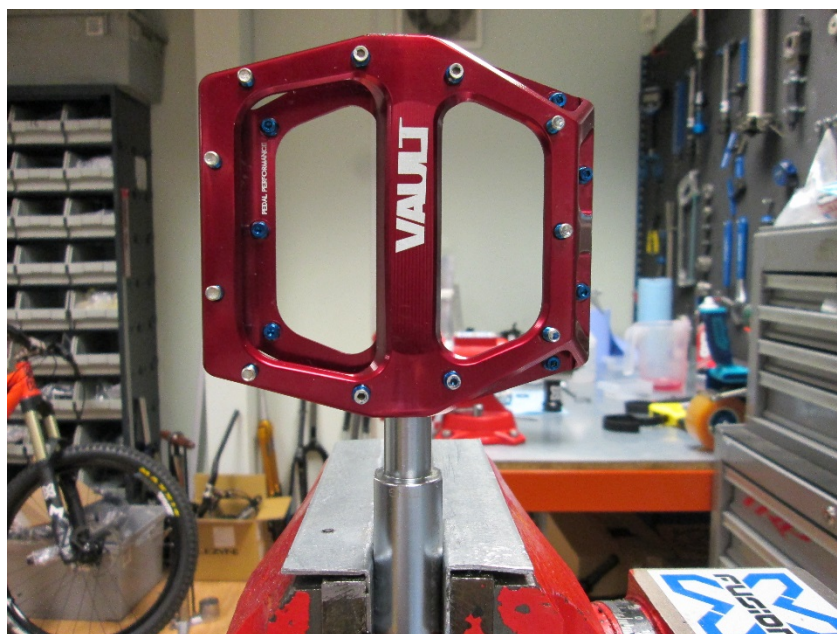
Using the axle you can gently push the old cartridge bearing out the other end, no hammering needed.



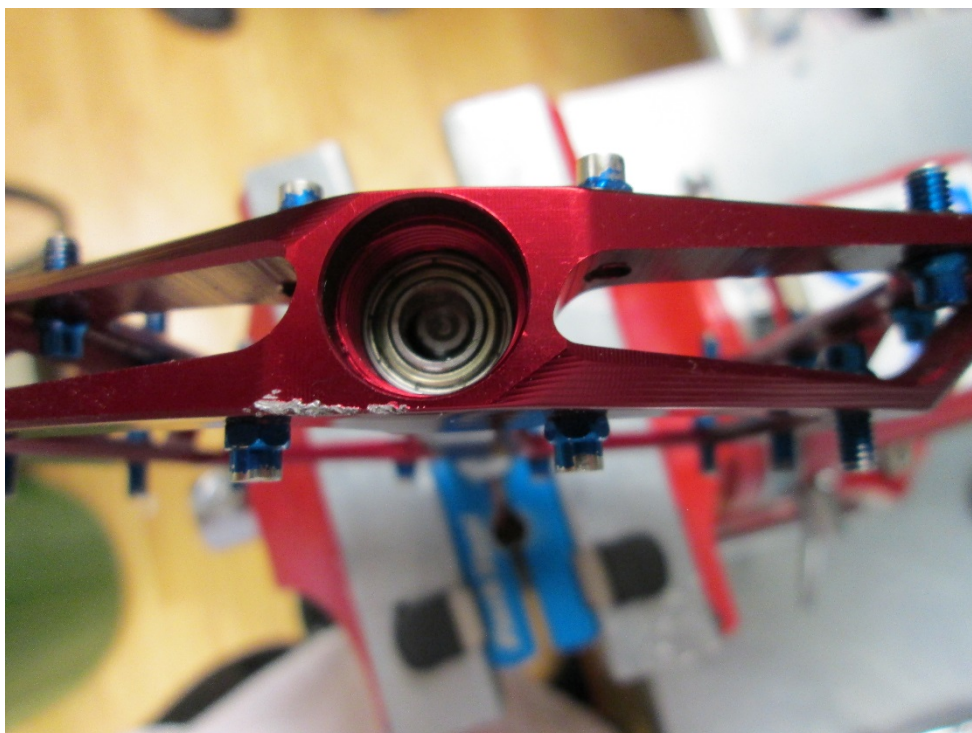
Flip the DMR pedal tool around in the vice so the end marked 'BUSH' is facing out.



Use a dab of Loctite 641 to make sure the bushing doesn't ride out of the pedal body in the future. Slide the new bushing onto the tool ready to be pushed into the pedal body. Notice that one end of the bushing has a slight chamfered edge, that enters the pedal first.



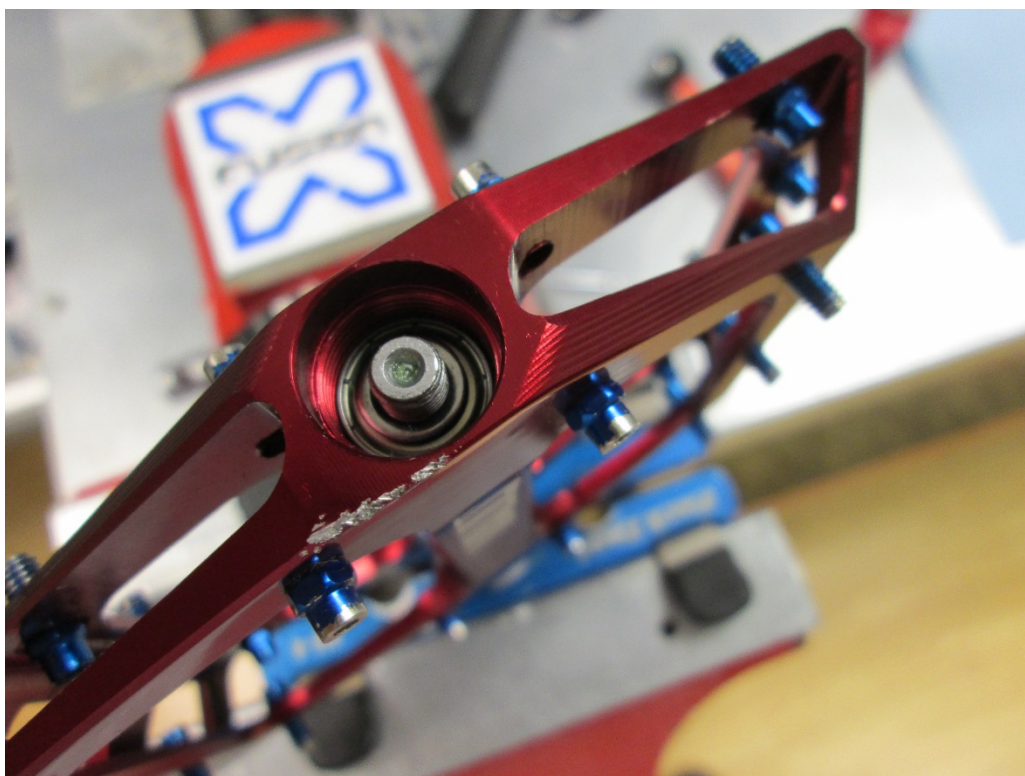
Making sure the body is clean of all dirt & debris, square the body up to the bushing and push with your hands until it stops.



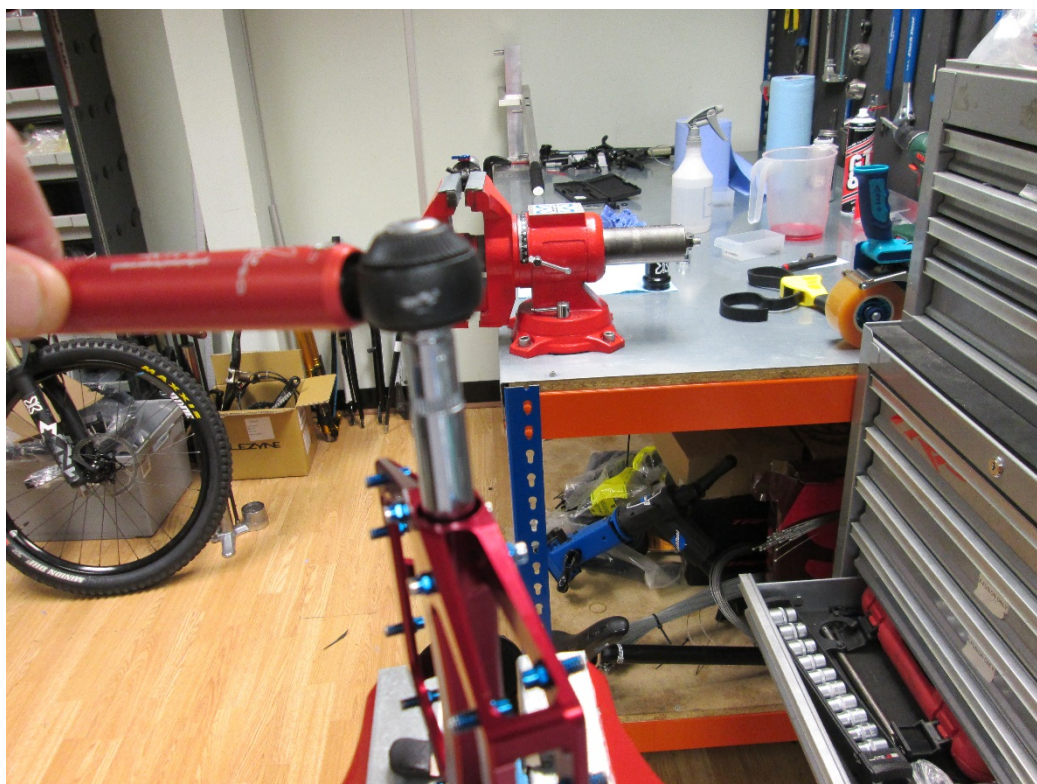
Next, place the cartridge bearing in the pedal flat against the shoulder in the body.



Slide the new rubber seal onto the clean axle and grease the bearing/bushing contact points ready for the pedal to be re-assembled.



Slide the pedal body onto the axle making sure the axle protrudes through the cartridge bearing. Making sure you place the washer over the axle.



Install the new nut and torque to a maximum of 10Nm then fit the 6mm alloy end cap.



After fitting the end cap, spin the axle and see if it has excessive drag. If so, the axle may need a light sanding to get rid of any stubborn bushing staining.

**please note that the RH pedal has a LH threaded nut so please do not force the nut to come undone, if you struggle then make sure you are pushing the right way.*